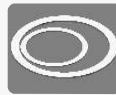




SHIM KITS



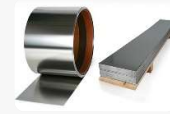
PRE-CUT SHIM



AXIAL SHIM



CUSTOM SHIM



SHIM STOCK

## **SUBJECT: BES SHIM KIT ABC 600**

### ***0.05mm to 3mm – 300 Series Stainless Steel***

The above mentioned shim case contains its own unique set of shims nested perfectly into clearly marked slots, ensuring fast and accurate availability when needed on site.

The ABC 600 kit is available in black only and fitted with a durable foam inner to fit all sizes with clearly marked slots and contains the following shim combinations:

- Shim sizes A (50mm), B (75mm) and C (100mm):  
of the following thicknesses:  
0.05; 0.1; 0.2; 0.25; 0.4; 0.5; 0.7; 1.0; 2.0; 3.0mm -  
20 each
- Complete kit contains 600 shims.
- Weight of full kit: 24kg

Refill by purchasing individual shim packs as needed.



### **GENERAL:**

- Watertight, crushproof, and dustproof
- Easy open Double Throw latches
- Open cell core with solid wall design - strong, light weight
- O-ring seal - Automatic Pressure Equalization Valve - balances interior pressure, keeps water out
- Comfortable rubber over-moulded handle

### **DIMENSIONS:**

- Shipping (L x W x H): 50.5 cm x 23 cm x 43.5 cm