



SHIM KITS



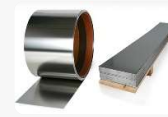
PRE-CUT SHIM



AXIAL SHIM



CUSTOM SHIM



SHIM STOCK

## **SUBJECT: BES SHIM KIT F 90**

### ***0.05mm to 3mm – 300 Series Stainless Steel***

The above mentioned shim case contains its own unique set of shims nested perfectly into clearly marked slots, ensuring fast and accurate availability when needed on site.

The F 90 kit is available in black only and fitted with a durable foam inner to fit all sizes with clearly marked slots and contains the following shim combinations:

- Shim sizes F (150mm):  
of the following thicknesses;  
0.05; 0.1; 0.2; 0.25; 0.4; 0.5; 0.7; 1.0mm - 10 each  
2.0mm and 3.0mm - 5 each
- Complete kit contains 90 shims.
- Weight of full kit: 9.6kg

Refill by purchasing individual shim packs as needed.



## **GENERAL:**

- Watertight, crushproof, and dustproof
- Easy open Double Throw latches
- Open cell core with solid wall design - strong, light weight
- O-ring seal - Automatic Pressure Equalization Valve - balances interior pressure, keeps water out
- Comfortable rubber over-moulded handle

## **DIMENSIONS:**

- Shipping (L x W x H): 29.6 cm x 23 cm x 27 cm